

Ontario Wheat Crop Outlook

Scott Krakar
Palm Coast, FL
March 2013

Ontario **Wheat**



EXPERIENCE. INNOVATION. QUALITY. WE DELIVER.

2012 in Review

- 630,000 acres **winter wheat** harvested
 - 79 bu/acre yield
 - 1.35 million tonnes (49.77 million bushels)
- 70,000 acres **spring wheat** harvested
 - 59.4 bu/acre yield
 - 0.11 million tonnes (4.16 million bushels)
- 1.46 million tonnes **total wheat** production

2013 Ontario Estimated Production

- Estimated 950,000 acres of winter wheat planted
 - 2.18 tonnes/acre = 2.071 million tonnes
 - 80.0 bus/acre = 76.0 million bushels
 - Planted early into good conditions
 - Variable snow cover

Ontario Estimated Production



Wheat Class	2012 / 2013			Projected 2013 / 2014		
	Bushels (mil)	Tonnes		Bushels (mil)	Tonnes	
Soft Red Winter	38.32	1,043,000	77%	62.32	1,696,000	82%
Soft White Winter	3.98	108,000	8%	5.32	145,000	7%
Hard Red Winter	7.47	203,000	15%	8.36	228,000	11%
	49.77	1,354,000		76.00	2,069,000	

EXPERIENCE. INNOVATION. QUALITY. WE DELIVER.

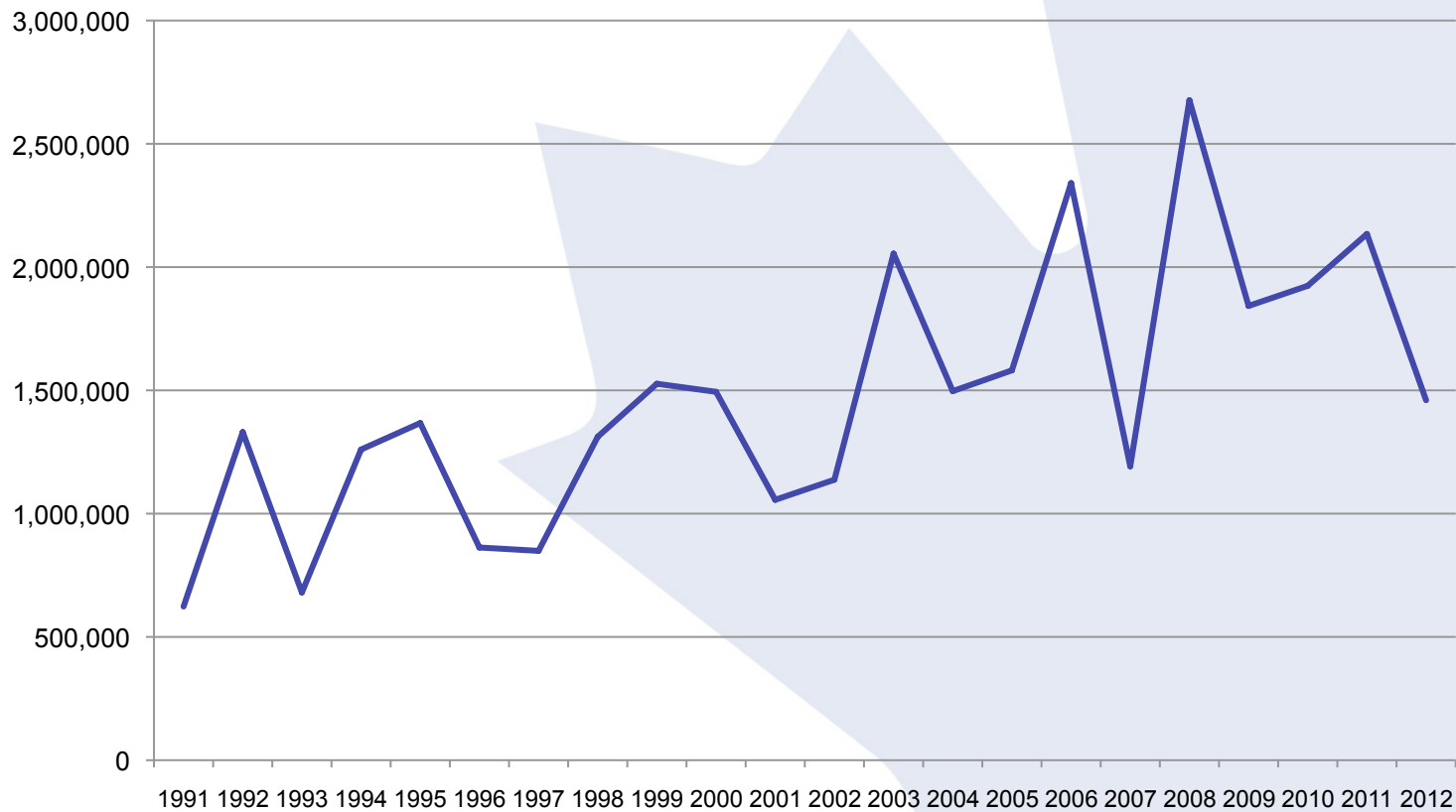
Ontario Wheat Utilization

- 800,000+ tonnes used by the domestic flour, feed and seed industries
- 400,000 tonnes of wheat is expected to be exported to the nearby US
- Less overseas export opportunities this past year

Ontario Farmers Like Growing Wheat!



Historic Production of Ontario Wheat (tonnes)

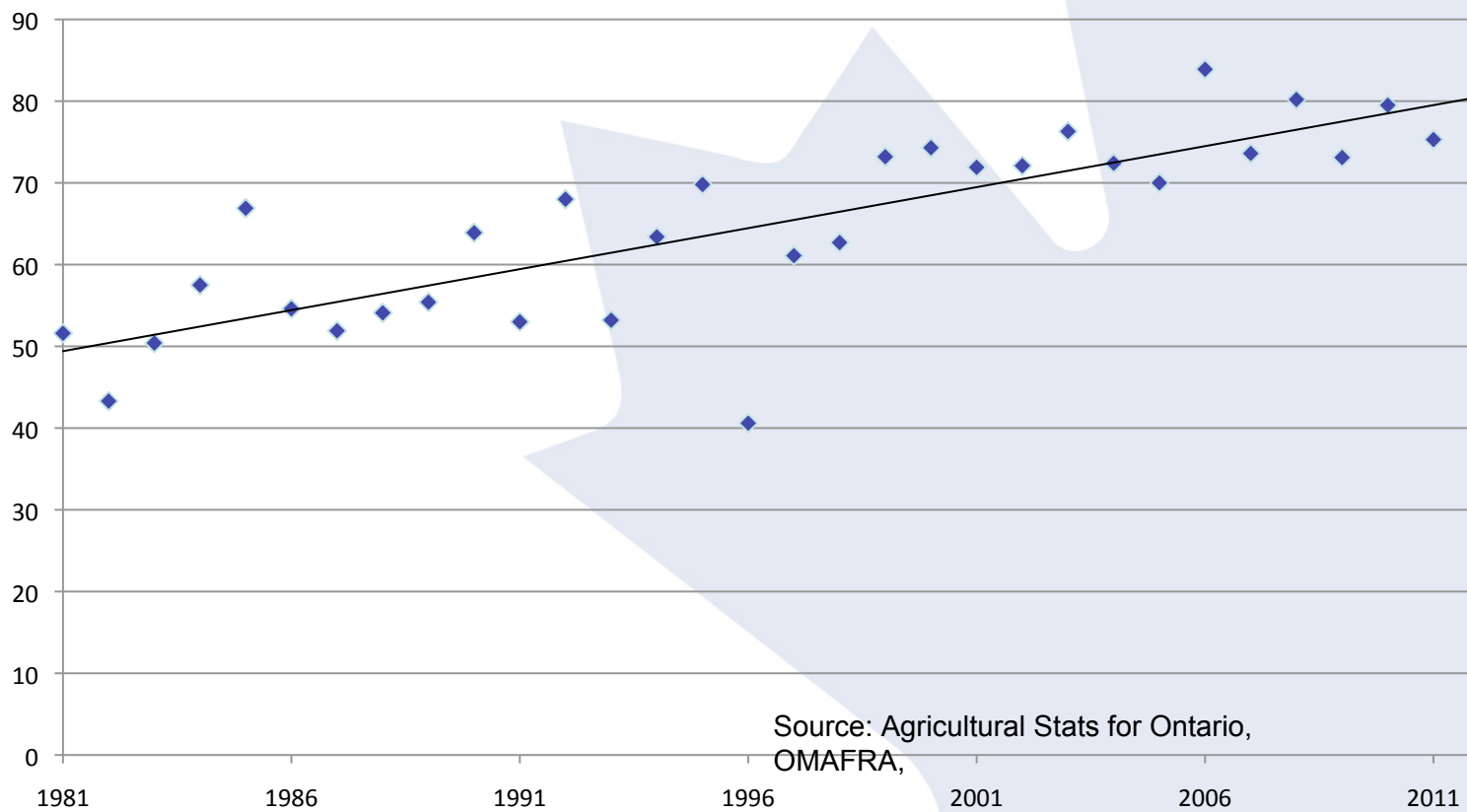


EXPERIENCE. INNOVATION. QUALITY. WE DELIVER.

Provincial Winter Wheat Yields (1981-2012)



Ontario Winter Wheat Yield 1981-2012 (bu/acre)



Source: Agricultural Stats for Ontario,
OMAFRA,

EXPERIENCE. INNOVATION. QUALITY. WE DELIVER.

Updated: February, 2010

Thank you!

EXPERIENCE. INNOVATION. QUALITY. WE DELIVER.

Ontario **Wheat**

